



B&B DENTAL
implant company



PROSTHETIC PROCEDURES

BASIC INFO

DURAVIT IMPLANT LINES
3P - EVOLUTION - WIDE

TEMPORARY ABUTMENT - TITANIUM

INTENDED USE

Engaging abutments are used for

- Screw-or cement-retained temporary crowns
- Cement-retained temporary bridges
- Non-engaging abutments are used for Screw-retained temporary bridges

CHARACTERISTICS

The Titanium temporary Abutment has been designed as temporary and easily customized by the clinician or in the laboratory by the dental technician.

NOTE

Do not use for longer than 180 days.

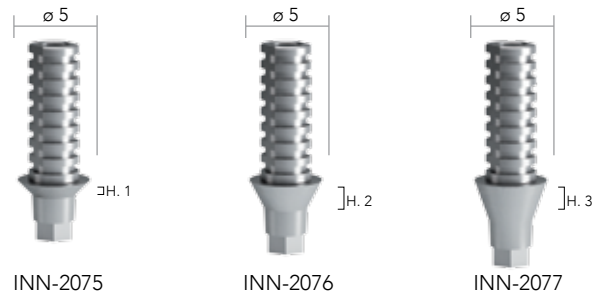
Place temporary restorations out of occlusion.

The temporary abutment can be shortened vertically no more than 6 mm with usual tools and technique.

The devices are provided non-sterile and they are for single use only. Abutment can be steam sterilised (134C°/5 Min).

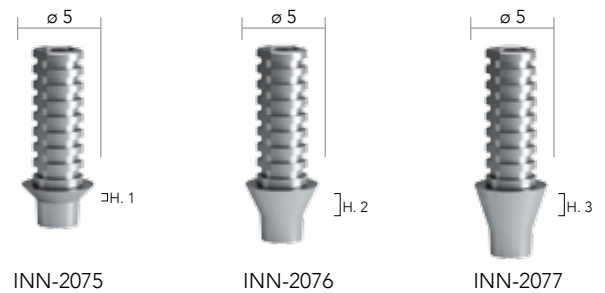
NON-ROTATING STRAIGHT ABUTMENTS

Complete with Prosthetic Screw



ROTATING STRAIGHT ABUTMENTS

Complete with Prosthetic Screw



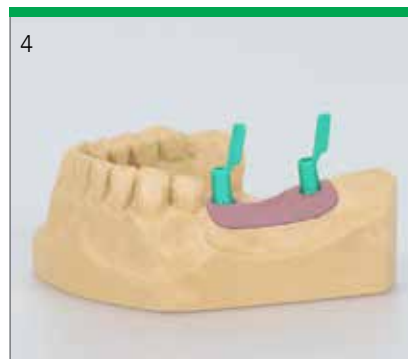
Fabricate the master cast including a gingival mask.



For optimal esthetic planning, model a full anatomical wax-up.



Make 2 silicon key over the full wax-up in order to define the optimal shape of the customized temporary abutment.



Place the try-in abutment on the implant or implant analog.

This will aid in checking the gingival height.



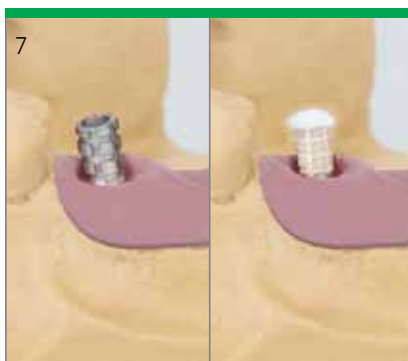
5

Mount the temporary abutment on the master cast or in patient's mouth. Mark the appropriate heights according to the individual situation.



6

Shorten the temporary abutment and then check the heights with the silicone key previously cut.



7

Sandblast and coat with opaque.



8

Fill the 2nd silicon key with acrylic resin.



9

Press the silicon key on the model and use a standard technique to fabricate the temporary crown (vacuum-formed sheet technique as shown here).



10

Remove excess acrylic.



11

Polish and clean the temporary restoration,
Reopen the screw channel.



12

Place the temporary restoration on the implant and tighten the screw with a torque of 25 cm.